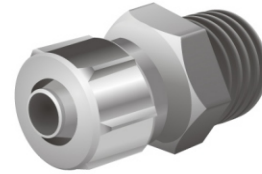
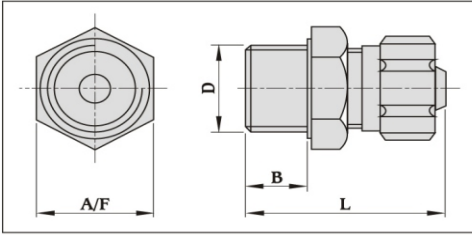


Male Connectors (MC)

Basic Dimensions

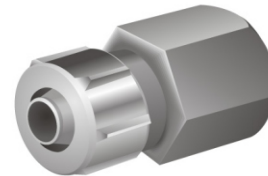
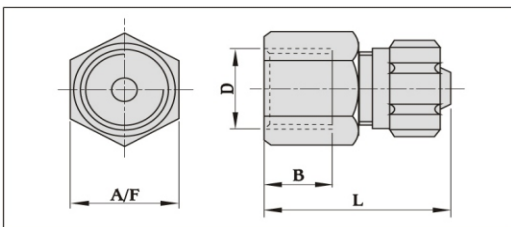


Material : Aluminium finish
yellow passivation
for * EN-1A
Finish : Blue anodised

Order Code No. And Type	Tube I.D. in mm	Connection (d)	Nominal Bore in mm	Dimensions		
				B mm	L mm	A/F
MC - M5 - PU3 *	3	M5	2.4	5.5	18	8 mm
MC - M5 - PU4 *	4	M5	3.4	5.0	23	1/2 "
MC - 1/16" - PU3*	3	1/16" BSP	2.4	5.0	18	10 mm
MC - 1/16" - PU4*	4	1/16" BSP	3.4	7.0	25	1/2 "
MC - 1/8" - PU3	3	1/8" BSP	2.4	6.5	21	1/2 "
MC - 1/8" - PU4	4	1/8" BSP	3.4	8.5	27	1/2 "
MC - 1/8" - PU6	6	1/8" BSP	5.3	8.5	27	1/2 "
MC - 1/8" - PU8	8	1/8" BSP	7.0	7.5	31	5/8 "
MC - 1/4" - PU3	3	1/4" BSP	2.4	9.0	24	5/8 "
MC - 1/4" - PU4	4	1/4" BSP	3.4	8.5	27	5/8 "
MC - 1/4" - PU6	6	1/4" BSP	5.3	8.5	27	5/8 "
MC - 1/4" - PU8	8	1/4" BSP	7.0	8.5	33	5/8 "
MC - 1/4" - PU9	9	1/4" BSP	8.0	8.5	33	3/4 "
MC - 3/8" - PU4	4	3/8" BSP	3.4	13.0	34	7/8 "
MC - 3/8" - PU6	6	3/8" BSP	5.3	13.0	34	7/8 "
MC - 3/8" - PU8	8	3/8" BSP	7.0	13.0	39	7/8 "
MC - 3/8" - PU9	9	3/8" BSP	8.0	13.0	39	7/8 "
MC - 1/2" - PU4	4	1/2" BSP	3.4	11.0	29	1"
MC - 1/2" - PU6	6	1/2" BSP	5.3	11.0	29	1"
MC - 1/2" - PU8	8	1/2" BSP	7.0	13.0	38	1"
MC - 1/2" - PU9	9	1/2" BSP	8.0	13.0	38	1"
MC - 1/2" - PU13	13	1/2" BSP	12.0	14.5	41	1"

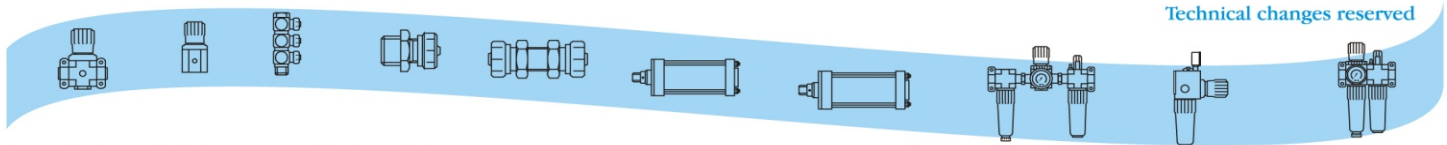
Female Connectors (FC)

Basic Dimensions



Material : Aluminum
Finish : Blue anodised

Order code No. and type	Tube ID in mm	Connection (D)	Nominal Bore in mm	Dimensions		
				B mm	L mm	A/F
FC - 1/8" - PU4	4	1/8" BSP	3.4	10.0	28	1/2 "
FC - 1/8" - PU6	6	1/8" BSP	5.3	10.0	28	1/2 "
FC - 1/4" - PU4	4	1/4" BSP	3.4	10.0	28	5/8 "
FC - 1/4" - PU6	6	1/4" BSP	5.3	10.0	28	5/8 "
FC - 1/4" - PU8	8	1/4" BSP	7.0	12.0	34	5/8 "
FC - 3/8" - PU6	6	3/8" BSP	5.3	12.0	31	3/4 "
FC - 3/8" - PU8	8	3/8" BSP	7.0	12.0	35	3/4 "
FC - 1/2" - PU8	8	1/2" BSP	7.0	15.5	35	1"



Technical changes reserved