



"aira" offers "Stainless Steel Triclover Ends" attached in all the stainless steel valves for Hygienic applications like, Pharmaceuticals (Drugs), Food Process Industries, Dairy Plants, Beverages, Biotech, Personal Care and Cosmetic Industries.

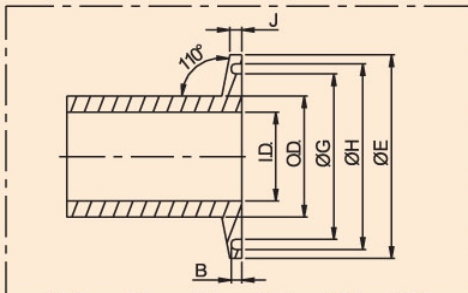
Silent Features :

- Guaranteed Surface finish • Electro-polishing in valve and the T.C. ends
- Dimensional Accuracy • No gaps in joints • Easy to disassemble.

"Airmax" has inhouse facilities for electro-finishing to the valves and T.C. ends Electro-polishing Treatment, which...

- Improve sanitising results and reduces down time. • Maximise passivation and improves corrosion resistance. • Redduces friction coefficient. • Offers longer shelf life.

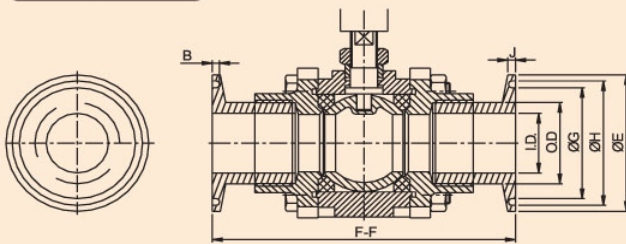
TC END CONNECTOR



Dimensions : (All dimensions are in MM)

Valve Size		↖E	↖G	↖H	I.D.	O.D.	J	B
MM	Inch							
15	1/2"	34	25.5	29.5	12.5	18.5	2.8	1.5
20	3/4"	34	25.5	29.5	17	23	2.8	1.5
25	1"	50.5	42	46	24	31	2.8	1.5
40	1.1/2"	50.5	42	46	32	41	2.8	1.5
50	2"	64	55.5	59.5	42.5	52.5	2.8	1.5
65	2.1/2"	77.4	68.6	72.6	60.3	70	2.8	1.5
80	3"	90.9	81.3	85.3	73	83	2.8	1.5

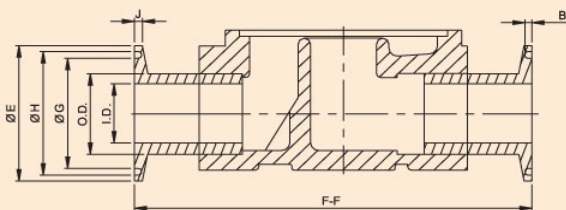
BALL VALVE



Dimensions : (All Dimensions are in mm)

Valve Size		↖E	↖G	↖H	I.D.	O.D.	J	F-F	B
MM	Inch								
15	1/2"	34	25.5	29.5	12.5	18.5	2.8	81	1.5
20	3/4"	34	25.5	29.5	17	23	2.8	86.7	1.5
25	1"	50.5	42	46	24	31	2.8	88.5	1.5
40	1.1/2"	50.5	42	46	32	41	2.8	106.5	1.5
50	2"	64	55.5	59.5	42.5	52.5	2.8	134.6	1.5
65	2.1/2"	77.4	68.6	72.6	60.3	70	2.8	187	1.5
80	3"	90.9	81.3	85.5	73	83	2.8	187	1.5

ISD / GSD / STEAM SOLENOID VALVE



Dimensions : (All Dimensions are in mm)

Valve Size		↖E	↖G	↖H	I.D.	O.D.	J	F-F	B
MM	Inch								
15	1/2"	34	25.5	29.5	12.5	18.5	2.8	95	1.5
20	3/4"	34	25.5	29.5	17	23	2.8	110	1.5
25	1"	50.5	42	46	24	31	2.8	125	1.5
40	1.1/2"	50.5	42	46	32	41	2.8	150	1.5
50	2"	64	55.5	59.5	42.5	52.5	2.8	165	1.5